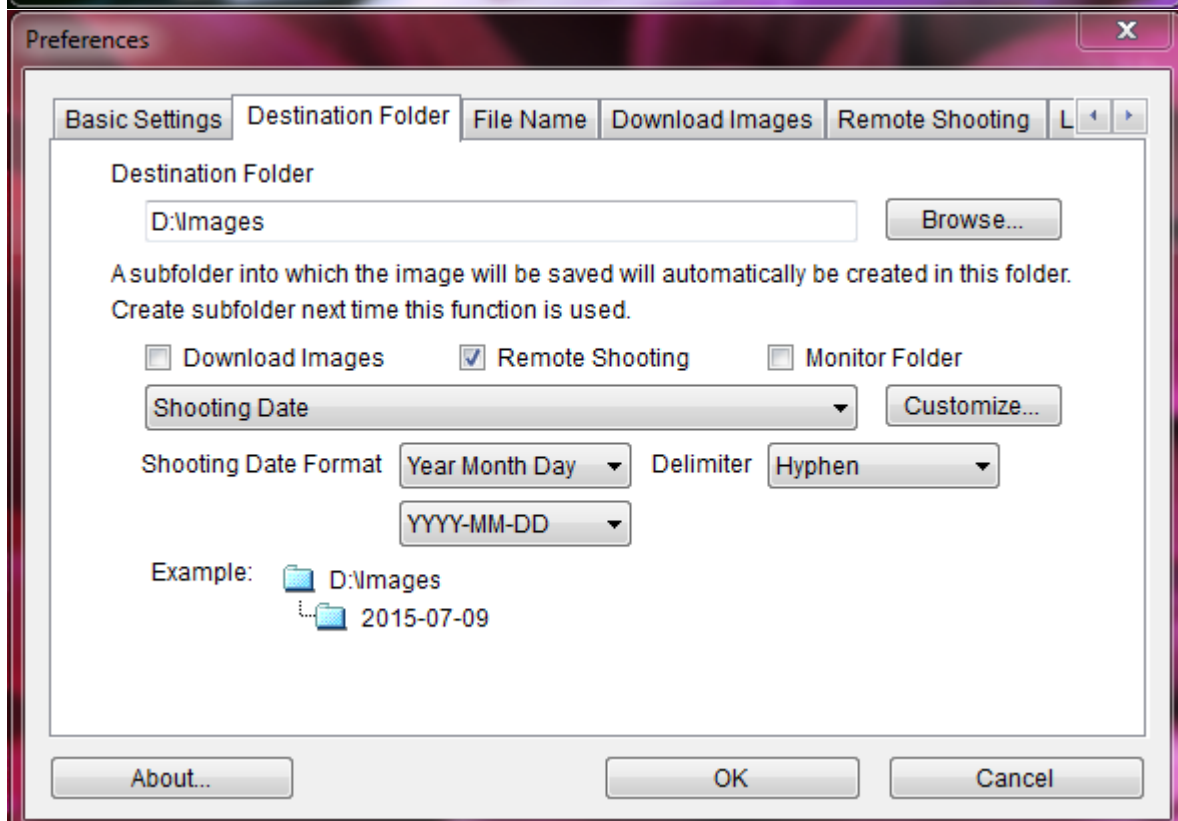
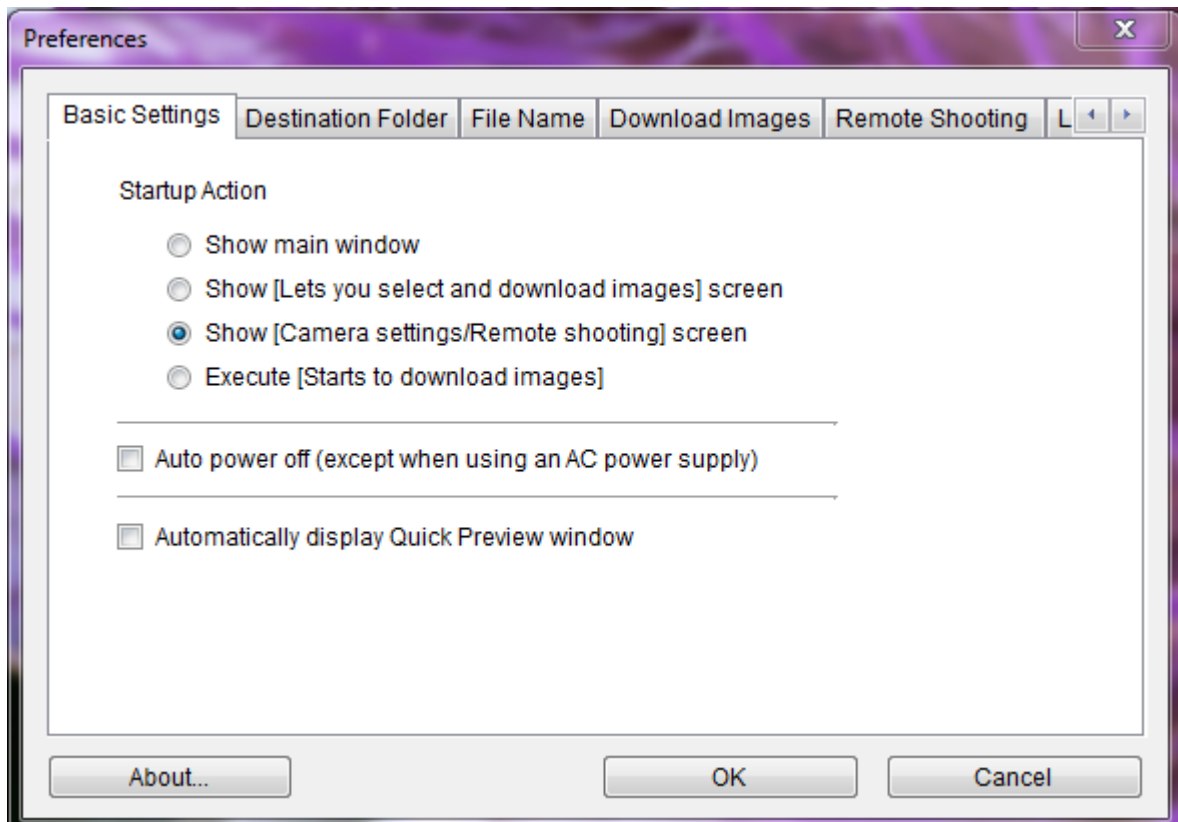
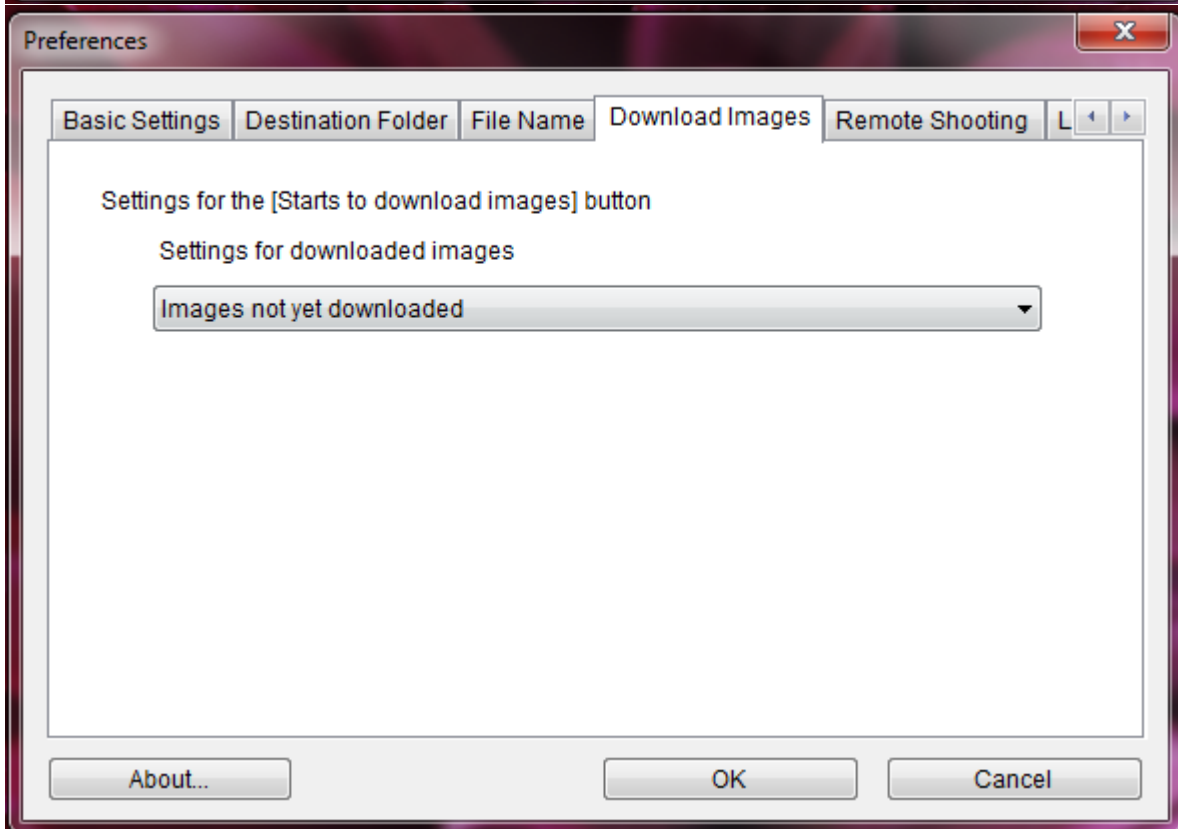
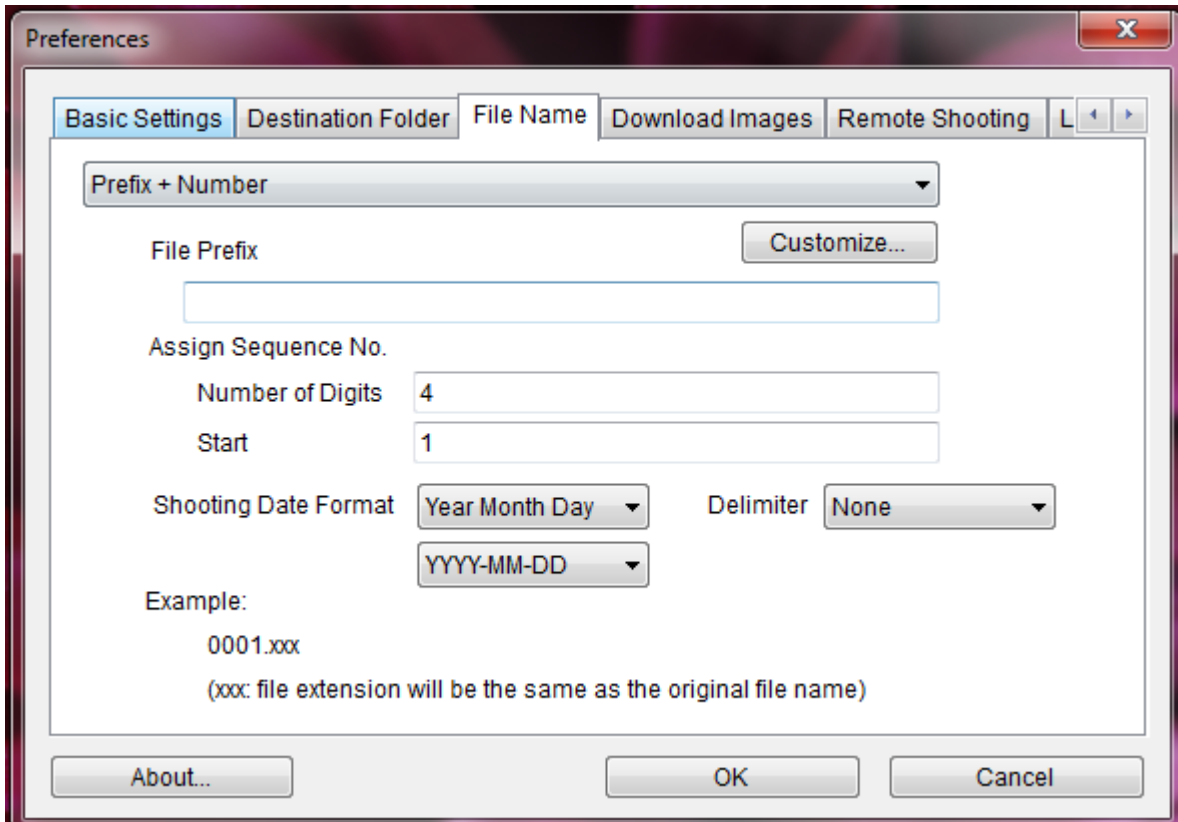
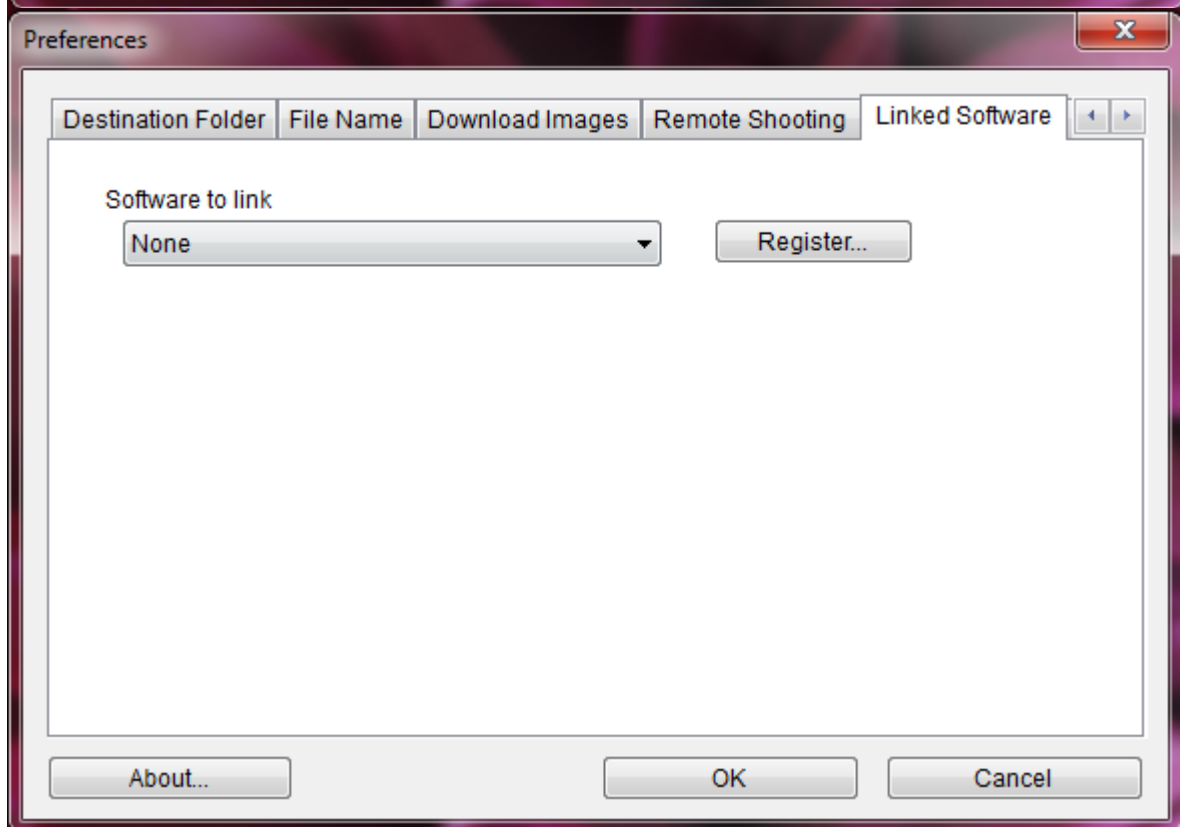
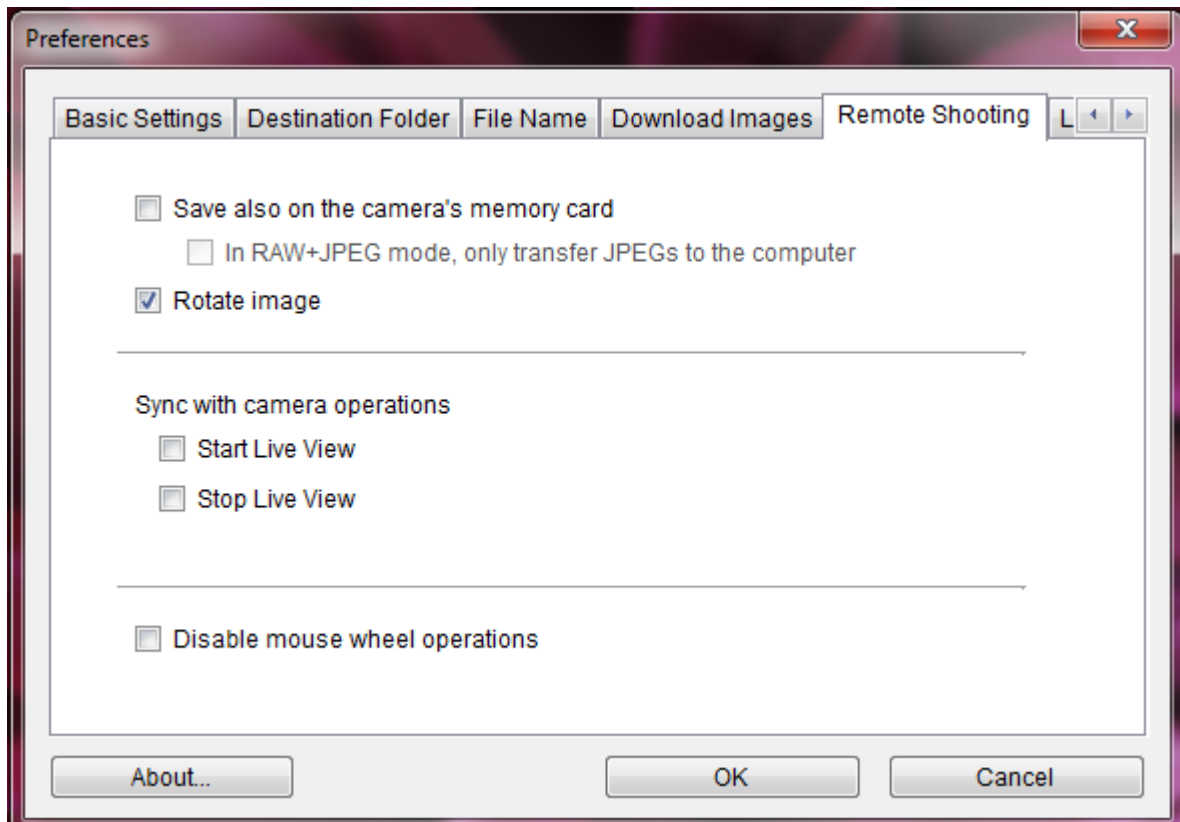


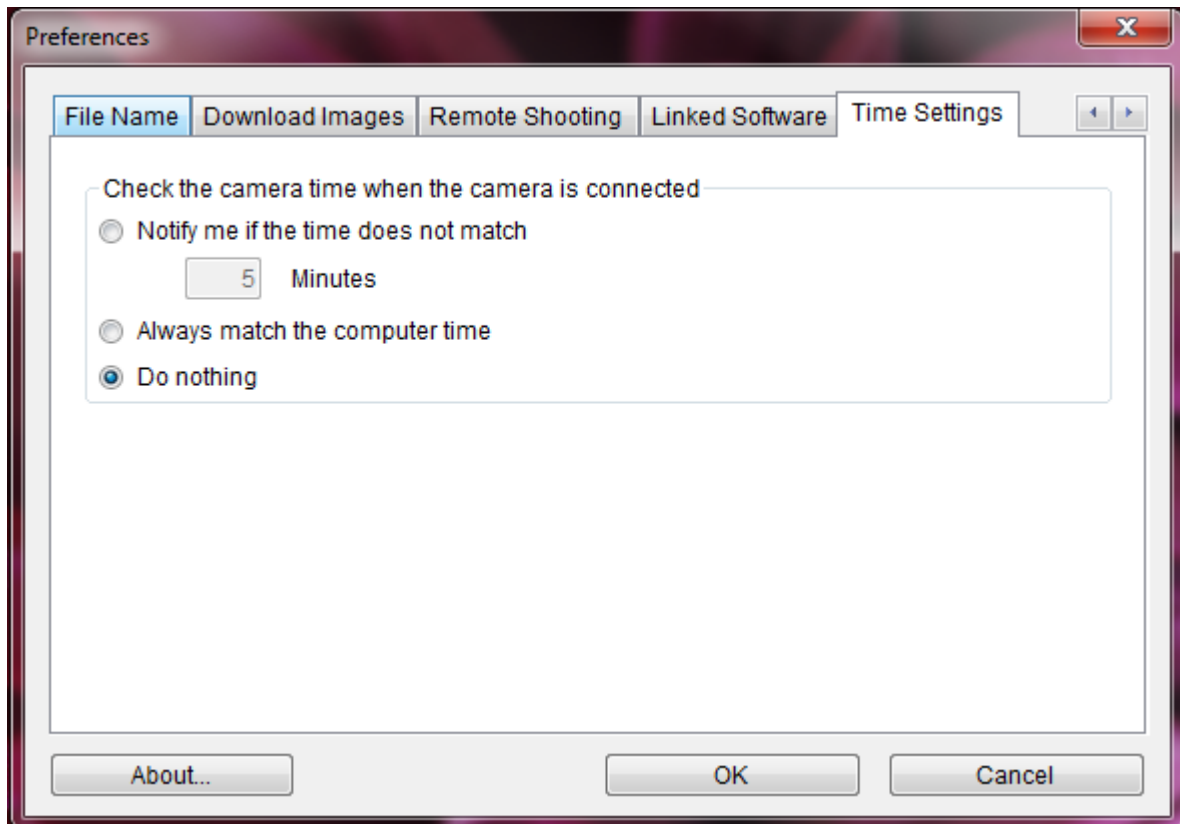
## EOS Utility First Time Setup

1. Install EOS Utility from either the Canon provided cd or from downloading the application from Canon's website (note the website requires you to have the camera's serial number in order to download software).
2. Once installed, click on EOS Utility Preferences and set as according to the following series of images.











3. Make sure that you click the right upper corner of the EOS Utility application which will cause the program to rotate all images to portrait mode. Be sure to test image orientation by taking a shot (note that test shot and live view will not show correct orientation of image).